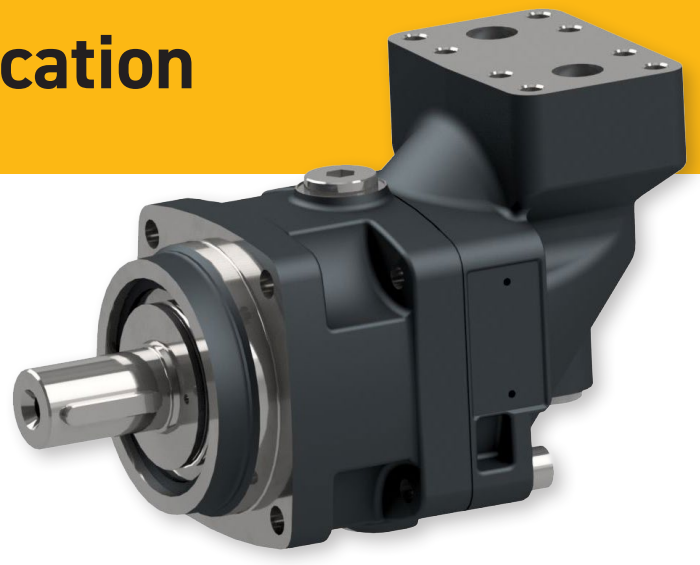


# 3 Reasons to Choose F10 for Your Application



The optimized F10 series is further development from well-known F11/F12 series. Robust, reliable and unbeatable efficiency are still the key factors for success. The F10 pump & motors are designed to be the most cost optimized solutions in applications with lower pressure demands.

## 1 Unbeatable efficiency

The optimized F10 series has the heritage from well-known F11/F12 series. The patented spherical piston design in combination with gear synchronization gives the most efficient and reliable solution.

Overall efficiency up to 96 % gives lowest power losses, lowest fuel consumption and reduced environmental footprint.

**REDUCED POWER CONSUMPTION**



**REDUCED ENVIRONMENTAL FOOTPRINT**



## 2 Compact design

**13 %** ↓ The new compact F10 series are up to 13 % smaller envelope size and 25 % lower weight compared to F12 series. This will enable easier installation and reduced total weight of the installation.

The small envelope size of the motor can be specified with various integrated options for fully customized solution.

**25 %** ↓

**EASY INSTALLATION**



**INCREASED PAYLOAD**

## 3 Cost effective

**GREAT VALUE FOR MONEY**

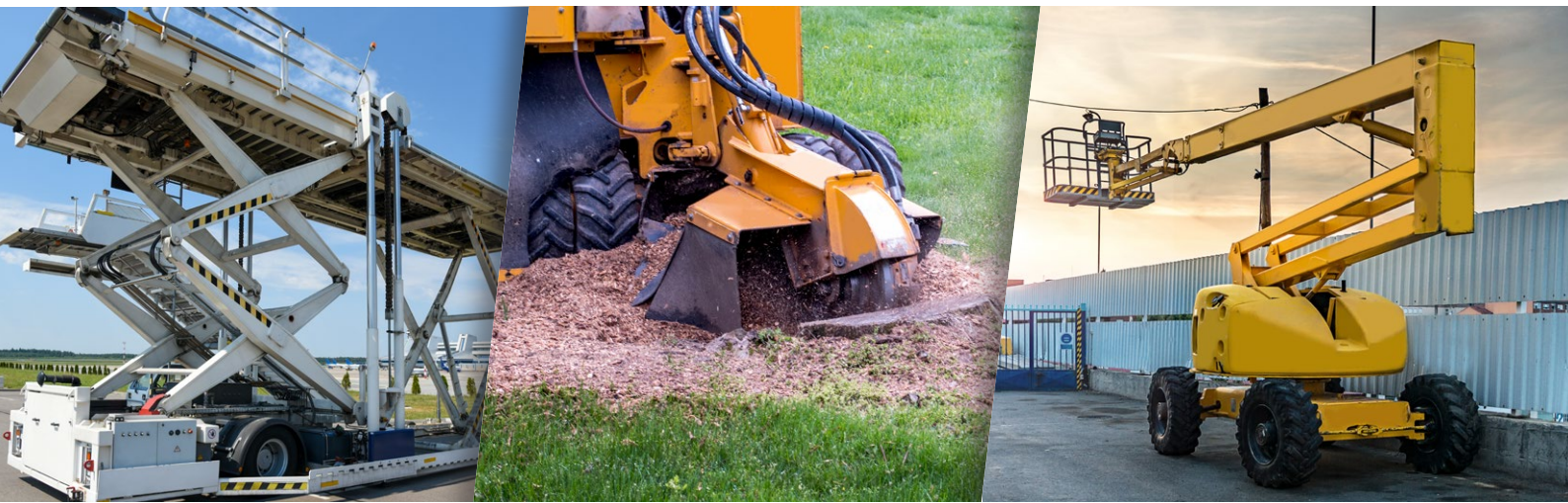


**REDUCED TOTAL COST OF OWNERSHIP**



Our new F10 is optimized for medium duty applications with focus on sustainability. The unbeatable efficiency in combination with very robust and reliable bent-axis design will significantly reduce the total cost of ownership.

The compact design and reduced weight of F10 will secure a cost effective installation.



Visit our product page on [parker.com](http://parker.com) to find the catalogue and other support material.

[parker.com/pmde](http://parker.com/pmde)

© 2022 Parker Hannifin Corporation, all rights reserved