

SensoNODE™ Gold & Voice of the Machine™ Cloud

STARTER KIT

Getting Started

Start recording your measurements now!

The SensoNODE Gold and Voice of the Machine Cloud Starter Kit provides an out-of-the-box solution to begin measuring and recording crucial data immediately.

Only three steps are required:

1. Install the sensors 2. Supply power to the gateway 3. Login to Voice of the Machine Cloud.

Set alerts to notify responsible parties of an event, view actionable data in graphical form, and export data for further analysis.

The **SensoNODE Gold** and **Voice of the Machine Cloud Starter Kit** includes:



(1) 150 psi Pressure Sensor and (1) 5,800 psi Pressure Sensor

SensoNODE Gold Pressure Sensors are designed for accurate monitoring with the most commonly used pressures in the industry.



(1) SensoNODE Gold Temperature Sensor

SensoNODE Gold Temperature Sensors are designed for accurate tracking of in-line or ambient temperatures measured in Fahrenheit or Celsius.



(1) SensoNODE Gold Vibration Sensor

Parker's SensoNODE Vibration Sensors provide a simple and effective way to measure vibration of industrial machinery.



(1) SensoNODE Gold Analog Connector

The Analog Connector turns any wired 4-20mA sensor into a wireless device, making it easier to monitor any asset.



(1) SensoNODE Gold Repeater

The Repeater is used as a network range extender for all sensors connected to the gateway.



(1) SensoNODE Gold Gateway System

The gateway is the control center of the system which receives the data from the sensors and transmits it to Voice of the Machine Cloud.



(2) Adapters and (1) Cable

Pipe adapters to convert SAE o-ring port to NPT; M12 connection cable (6.5ft) for use with existing sensor and Analog Connector.

Installation

Sensors

Battery Installation

Tool needed: Torx T15 screwdriver

1. Correctly orient and insert battery
2. Correctly orient and place battery cover
3. Secure two T15 screws

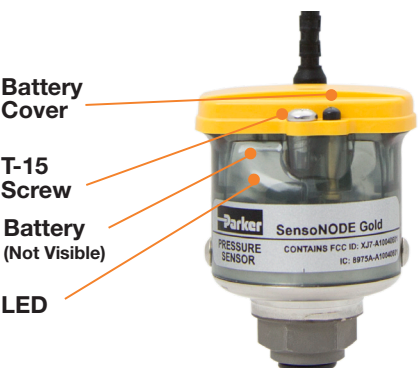
LED Behavior

1. Upon battery insertion:
red, green, blue sequence
2. Thereafter: blink every 20 seconds

Black Button (on battery cap)

- **DO NOT PUSH.** Only press button as directed by a Parker associate

Sensors



Gateway

Antenna Installation

Please see image to the right for correct antenna locations

Electrical Power Installation

- Flat Side Facing the Ground and Plug in

Gateway



Voice of the Machine Cloud

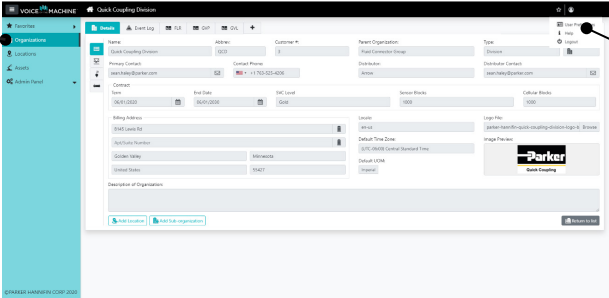
Logging into your Voice of the Machine Cloud Account

- 1. Review confirmation email, received when your order was processed
- 2. Click the link, in the confirmation email, to setup your password and complete activation
- 3. In the future, go to pcmvom.parker.com to login

Navigating Voice of the Machine Cloud

Organization

Manage Organizational Details, Alerts, Sensors, and Gateways

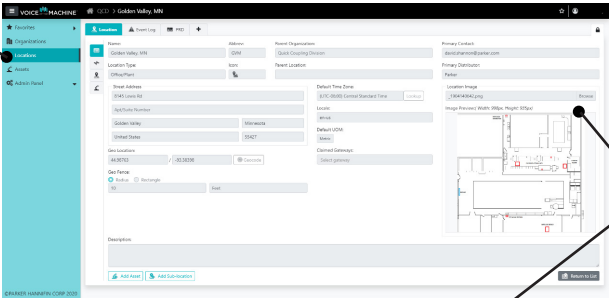


User Preferences

Set User's Details, Unit Of Measure, Language, Favorites, and Notification Delivery

Location

Manage Location Details, Associated Signals, Sub-Locations, and Assets

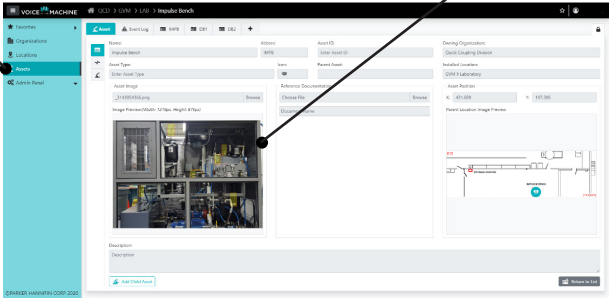


Location/Asset Image

Used in Image Overlay Dashboards

Asset

Manage Asset Details, Associated Signals, Sub Assets, and Reference Documents



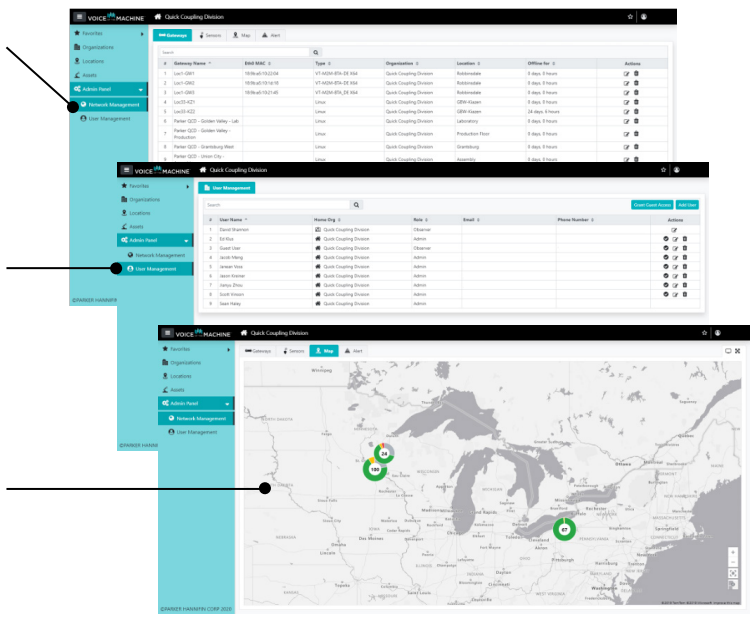
Voice of the Machine Cloud

Navigating Admin Panel

Network Management
Manage Gateway, Sensor, and Network Alerts for the whole Organization.

User Management
Add, Edit, or Delete Users. Grant Guest Access to additional Organizations

Network Map
Map Overlay of All Gateway and Sensors

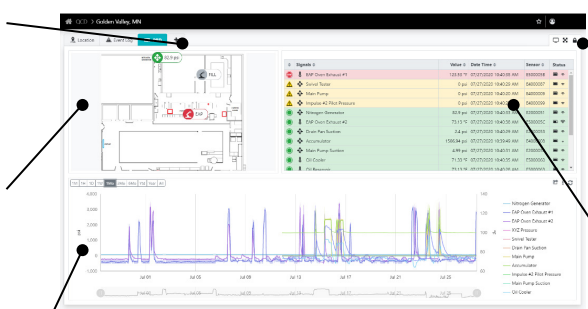


Navigating VoM Dashboards

+ Add a Dashboard
Multiple Templates and Widgets

Image Overlay
Uses Location/Asset Image to display Signal Values and Assets with Alert Colors

Trend Chart
Trending History of one or multiple Signals



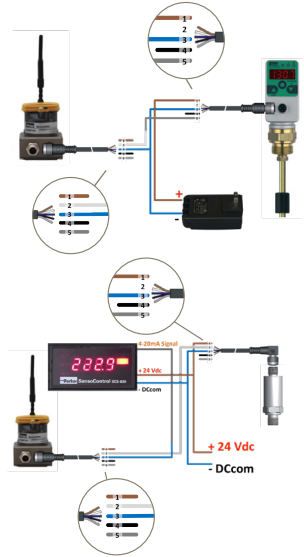
Dashboard Controls
Kiosk Mode, Full screen, and Unlock Dashboard for Widget Configuration

Data Table
View All Signal Values and Alert Status

Setup an Analog Connector

The Analog Connector will display in Voice of the Machine Cloud as a Raw Percentage Signal. Once the Signal is configured it will display in Signal Association as a Calculated Signal.

1. Login to **Voice of the Machine Cloud**
2. Click on **the Location/Asset** that will be associated
3. Click **Signal Association Tab**
4. Click on the **+** for **Calculated Signal**
5. Input a **Signal Name**
6. Select a **Function Type** (4-20 Analog Mapping)
7. Select the **Sensor Serial Number**
8. Select a **Signal Type**
9. Select **Source UoM**
10. Input the mapped numerical value for **4mA**
11. Input the mapped numerical value for **20mA**
12. Click **Save** for **Calculated Signal**
13. Click **Save** for **Signal Association**



For more information on
SensoNODE and **Voice of the Machine** products:

Visit: www.parker.com/conditionmonitoring

Call: (763) 544-7781

Email: qcddot@parker.com

Have **questions** or need **help**?

Sign into our Condition Monitoring Service Desk
at <http://solutions.parker.com/iot-support>

Unites States

This device complies with Part 15 of the FCC Rules. Operation is subject to the following conditions:
(1) This device may not cause harmful interference, and (2) this device must accept any interference received, including interference that may cause undesired operation.

Changes or modifications not expressly approved by the party responsible for compliance could void the user's authority to operate the equipment.

This equipment has been tested and found to comply with the limits for a Class B digital device, pursuant to Part 15 of the FCC Rules. These limits are designed to provide reasonable protection against harmful interference in a residential installation. This equipment generates, uses, and can radiate radio frequency energy and, if not installed and used in accordance with the instructions, may cause harmful interference to radio communications. However, there is no guarantee that interference will not occur in a particular installation. If this equipment does cause harmful interference to radio or television reception, which can be determined by turning the equipment off and on, the user is encouraged to try to correct the interference by one or more of the following measures:

- Reorient or relocate the receiving antenna.
- Increase the separation between the equipment and receiver.
- Connect the equipment into an outlet on a circuit different from that to which the receiver is connected.
- Consult the dealer or an experienced radio/TV technician for help.

Canada

This device complies with Industry Canada license-exempt RSS standard(s).
Operation is subject to the following conditions: (1) this device may not cause interference, and (2) this device must accept any interference, including interference that may cause undesired operation of the device.

Cet appareil est conforme aux normes RSS exemptes de licence d'Industrie Canada. Son fonctionnement est soumis aux conditions suivantes: (1) cet appareil ne doit pas causer d'interférences, et (2) cet appareil doit accepter toute interférence, y compris les interférences pouvant provoquer un fonctionnement indésirable de l'appareil.

Notice: This radio transmitter (IC: 8975A-A10040601) has been approved by Industry Canada to operate with the antenna types listed below with the maximum permissible gain and required antenna impedance for each antenna type indicated. Antenna types not included in this list, having a gain greater than the maximum gain indicated for that type, are strictly prohibited for use with this device.

Avis: Cet émetteur radio (IC: 8975A-A10040601) a été approuvé par Industrie Canada pour fonctionner avec les types d'antennes énumérés ci-dessous avec le gain maximal admissible et l'impédance d'antenne requise pour chaque type d'antenne indiqué. Les types d'antennes ne figurant pas dans cette liste, ayant un gain supérieur au gain maximal indiqué pour ce type, sont strictement interdits pour l'utilisation avec cet appareil.

INST 3864-SK

Starter Kit Instructions

8/20

Antenna:

Parker P/N: QX-008-387 (Gain: 0±1.5 dBi;
Impedance – Nominal: 50 ohms)

EU Digital Transmission System
868MHz Radio Module:
Frequency Range: 868-870MHz
Output Power: 13.63 dBm ERP

Parker Hannifin Corporation
Quick Coupling Division
8145 Lewis Road
Minneapolis, MN 55427
phone 763 544 7781
fax 763 544 3418

© 2020 Parker Hannifin Corporation



ENGINEERING YOUR SUCCESS.