

# P1M Series

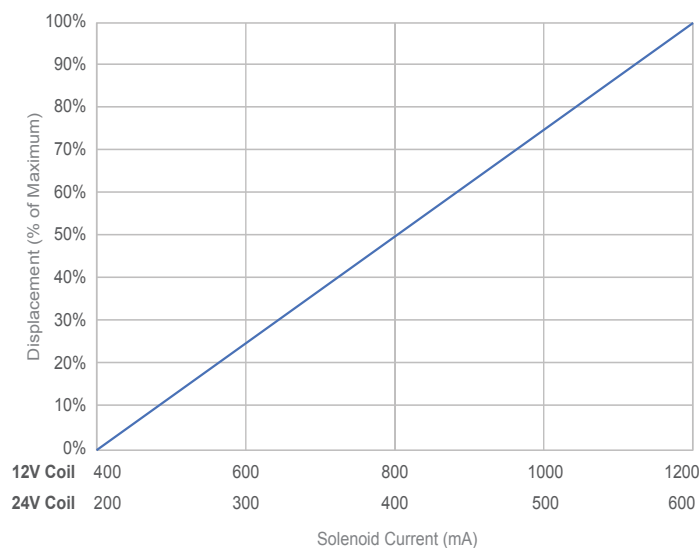
## Control Options



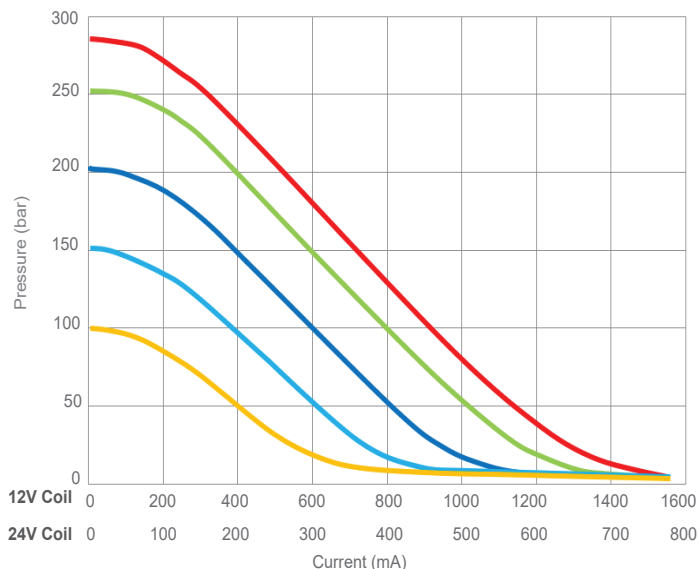
## Control Options

### Electronic Controls

Electronic Displacement Control  
Nominal Characteristics



Electronic Pressure Control (max default)  
Nominal Characteristics



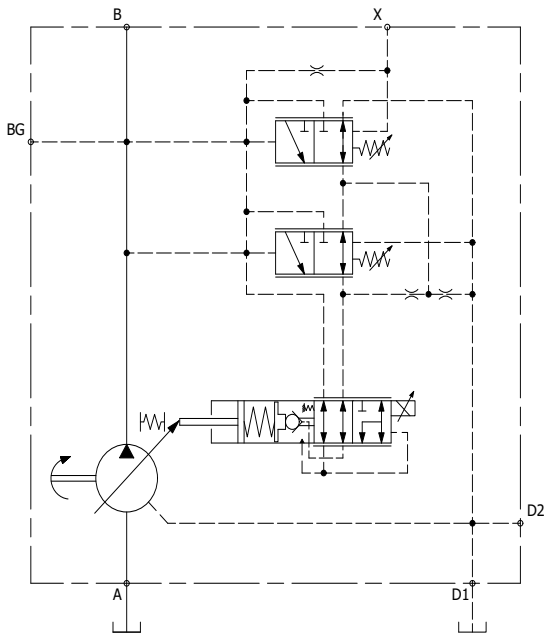
Valve Specifications	
Default Options	Min / Max
Voltage	12 VDC
Power	26 W
Current	2.2 A
Resistance	5.5 $\Omega$
Signal	100-250 Hz PWM ~35 Hz dither
Connector	DT04-2P Deutsch
Protection Class	Connector IP69K



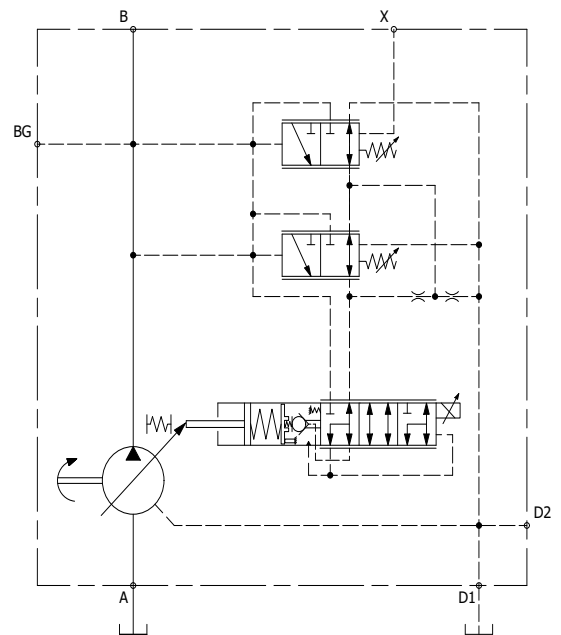
ENGINEERING YOUR SUCCESS.

# Electronic Control Schematics

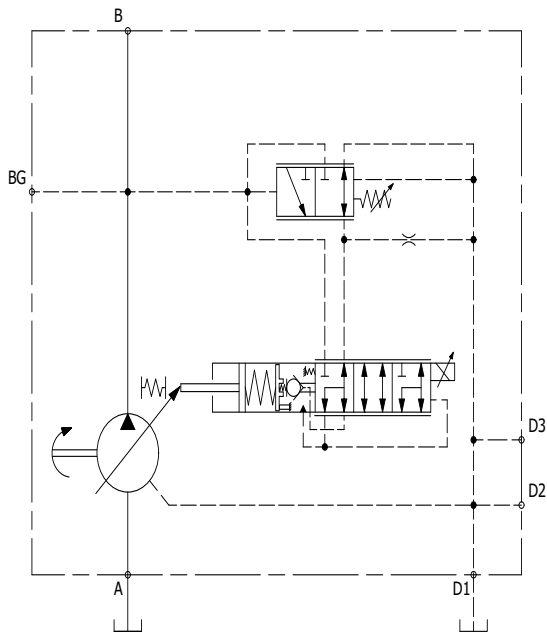
**Electronic Displacement (min default) with Remote Compensator**



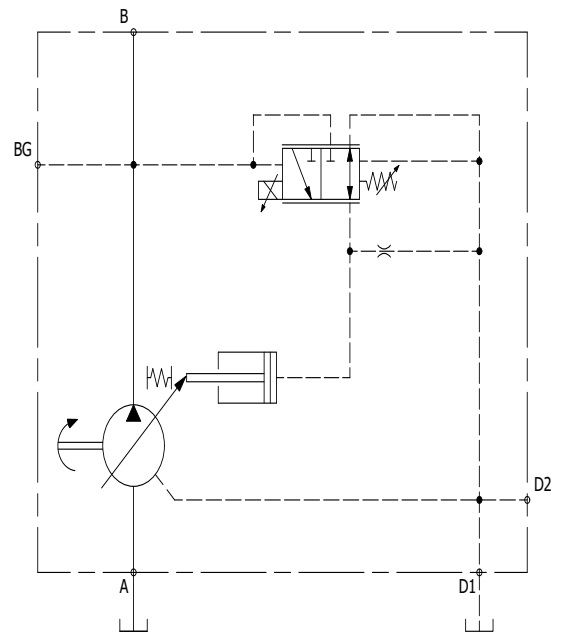
**Electronic Displacement (max default) with Load Sense and Pressure Compensator**



**Electronic Displacement (max default) with Pmax B-mod**



**Electronic Pressure Control (max default)**

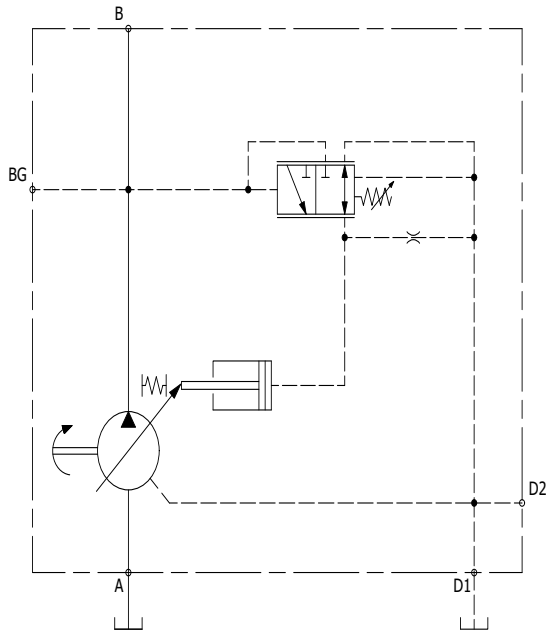


ENGINEERING YOUR SUCCESS.

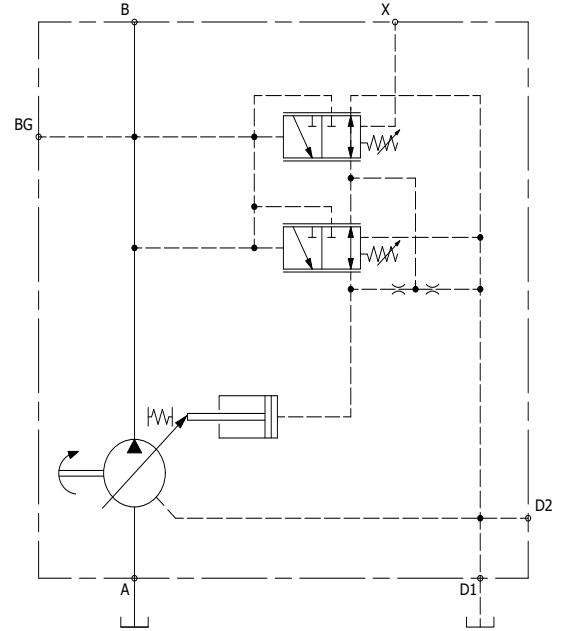
# Additional Control Options

- Pressure Compensator
- Load Sense
- Remote Compensator
- Electronic Unload

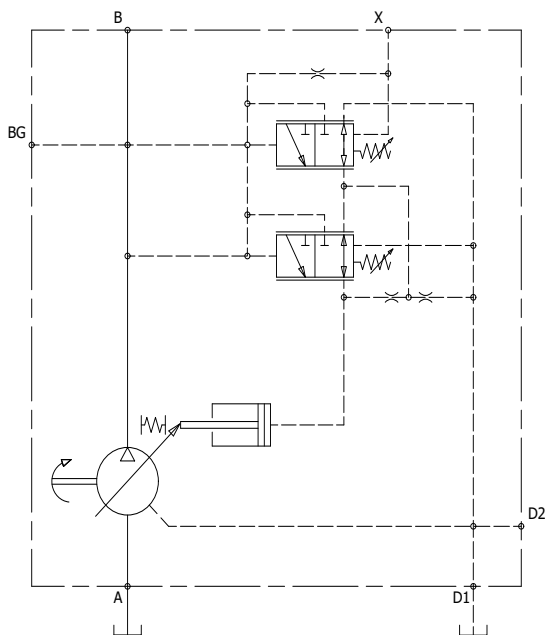
**Pressure Compensator**



**Load Sense with Pressure Compensator**



**Remote Compensator**



**Electronic Unload with Load Sense and Pressure Compensator**

